

**FOURTH, OPTIONAL,  
4<sup>TH</sup> GRADE, PARENT MEETING  
DECEMBER 1, 2016**



# **3 FOURTH GRADE CLASSROOMS...**

- **MRS. IRONS**
- **MISS LORANCE**
- **MRS SCHMIDT**

# **AGENDA ITEMS**

## **Uniform Reminders**

**December 9<sup>th</sup>: 80<sup>th</sup> Day of School** (Dress up for 3<sup>rd</sup>-5<sup>th</sup> grades ONLY)

**Upcoming Dress Up/Down Dates**

**Ten Marks-Review how to find scores and missed problems**

**i-Ready-introduction, research, suggestions for use**

# SCHOOL DRESS

## REGULAR



**Sneakers that lace up  
or Velcro.**



## SPECIAL DAYS







# DECEMBER 9<sup>TH</sup>-80<sup>TH</sup> DAY OF SCHOOL



# TEN MARKS

## SCORES AND QUESTIONS/ANSWERS

Choose Reports



tenmarks.com/student

80th day of school

My Account | Logout

TENMARKS an amazon company

Home Jam Sessions Reports TenMarket

Welcome Back, [Redacted]!

3,424

Operations & Algebraic Thinking

Measurement & Data

Number & Operations: Fractions

Geometry

Number & Operations in Base Ten

### Your Class Work

Your teacher hasn't assigned any class work.

Ask your teacher to assign work so you can progress through the domains, level up, earn points, and continue to learn more math.

TENMARKS an amazon company

My Account | Logout

Home Jam Sessions Reports TenMarket

3,424

Report Card Assignment Details Jam Session Report

## Your Report Card

### Summary

67.9% Average of Latest Scores

Domains	Total Questions	Percentage	Hints	Videos
Operations & Algebraic Thinking	100	51.2% <span></span>	57	13
Number & Operations in Base Ten	70	73.5% <span></span>	32	5
Number & Operations: Fractions	30	88.3% <span></span>	1	0

### Operations & Algebraic Thinking





3,424

Report Card

Assignment Details

Jam Session Report

## Your Report Card



### Summary

67.9% Average of Latest Scores

Domains	Total Questions	Percentage	Hints	Videos
Operations & Algebraic Thinking	100	51.2%	57	13
Number & Operations in Base Ten	70	73.5%	32	5
Number & Operations: Fractions	30	88.3%	1	0

### Operations & Algebraic Thinking



5,360

**Click on the Percent to see  
the questions and responses**

## Your Assignments

Assignment	Status	Score	Hints / Videos	Time Spent
Addition and Subtraction Using Standard Algorithm (4.NBT.4)	Completed on Sep 8, 2016	80.0%	0/0	28:11
Rounding Whole Numbers (4.NBT.3)	Completed on Sep 12, 2016	75.0%	10/3	1:18:04
Rounding Whole Numbers Using Representations (4.NBT.3)	Completed on Sep 13, 2016	90.0%	0/2	26:16
Multiplying by Powers of Ten (4.NBT.1)	Completed on Sep 14, 2016	67.5%	15/3	1:51:38
Relating Place Value and Multiples of 10 (4.NBT.1)	Completed on Sep 27, 2016	50.0%	6/2	15:00



Log in to Think Central-Name and Password is in the student planner. Our school district is...  
**School District of Indian River County.**

## Things to Do

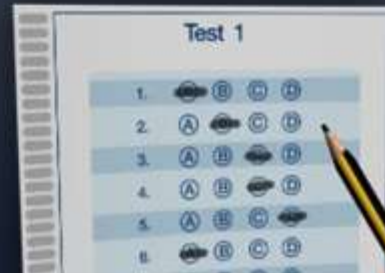
Access all assignments, their due dates, and status



## My Library



## My Scores



**Click on my score for scores, then click On the percent to see the questions/responses (marked correct or incorrect).**

**Click on my library for access to Science Fusion and Journeys. Florida Ready and Social Studies are **NOT** there.**

**Students click Things to do to take assessments.**

# I-READY

- 1. USES MANY OF THE TUTORIALS THAT ARE UTILIZED IN FLORIDA READY ELA AND MATH.
- 2. SCIENTIFICALLY RESEARCHED PROGRAM THAT IMPROVES MOST STUDENTS SCORES ON THE FSA (IF THEY SPEND AT LEAST 45 MINUTES A WEEK ON READING AND 45 MINUTES A WEEK ON MATH. WE DO NOT HAVE ENOUGH LAB TIME TO MEET THESE SUGGESTED TIME FRAMES. WE WILL USE IT AS MUCH AS POSSIBLE.
- 3. STUDENTS ARE SET ON A “PATH” ACCORDING TO THEIR DIAGNOSTIC SCORE. (WE WILL TAKE THE DIAGNOSTIC 2 MORE TIMES THIS YEAR). THE PATH DETERMINES LESSONS THAT WILL BE MOST BENEFICIAL TO THE CHILD. THEY ARE ALSO ASSESSED AS PART THE INTERACTIVE TUTORIALS. THE TUTORIALS RETEACH INFORMATION THAT WAS MISSED ON THE DIAGNOSTIC. EVERY CHILD SHOULD BE CHALLENGED AND TAUGHT.
- 4. MISS LORANCE’S CLASS IS KEEPING TRACK OF THEIR LESSONS AND AT LEAST 1 THING THEY LEARNED IN THEIR READING AND MATH NOTEBOOK.